

# NNELL



# NATIONAL NETWORK FOR EARLY LANGUAGE LEARNING **Networking Session**

**Hawaii Association of Language Teachers (HALT)**

**Teresa J. Kennedy**, NNELL Southwest Regional Representative

May 8, 2021



# ABOUT NNELL

**The mission of NNELL  
is to foster a network that  
empowers educators to advocate  
for and support early language  
teaching and learning.**

**Vision: Every child deserves the opportunity to learn another language.**

Since 1986  
educators have  
been supporting  
early language  
learning through  
**NNELL**



Carolyn Andrade	Rosemarie Benya	Christine Brown	Helena Curtain
Jack Darcy	Diane Ging	Betsy Grob	Donna Grundstadt
Mari Haas	Nancy Hess	Sheri Houpt	Laureen Hurt
Melanie Klutts	Sara Lindsley	Gladys Lipton	Myriam Met
Kurt Muller	Bettye Myer	Carol Ann Pesola	Joy Rehjilian-Burgy
Nancy Rhodes	Kathleen Riordan	Marcia Rosenbusch	Elsa Statzner
	G. Richard Tucker	Susan Walker	

NNELL's  
CORE  
BELIEFS ARE  
**BELIEFS**  
**BASED ON**  
**RESEARCH**

ALL ELEMENTARY  
SCHOOL  
STUDENTS  
SHOULD HAVE  
ACCESS TO  
WORLD  
LANGUAGE  
INSTRUCTION  
THAT IS

- HIGH QUALITY
- ONGOING
- SYSTEMATIC

# RESEARCH INFORMS NNELL'S MISSION / VISION



## RESEARCH INDICATES THAT:

- The period of **early childhood is considered an optimal time to begin learning a second language**, as the methods and materials used in early childhood classes are multi-modal and may facilitate second language acquisition and learning.
- Children in effective early second language programs **show overall gains on standardized tests of basic skills**, and derive additional cognitive, social, and affective benefits.
- The **integration of content and language learning** and the **development of positive attitudes** towards people who speak other languages occur more easily when long, articulated sequences of second language instruction begin in early childhood and become an integral part of school learning.
- Early second language learning may result in **improved phonological and phonemic awareness**, two building blocks of literacy in one's native language.

# COLLABORATE and ADVOCATE

**NNELL PROVIDES  
OPPORTUNITIES FOR  
COLLABORATION.**

NNELL MEMBERSHIP PUTS YOU IN  
CONTACT WITH OTHER EDUCATORS  
AND ADVOCATES OF EARLY LANGUAGE  
LEARNING

**<https://nnell.org/>**

**NNELL PROVIDES  
ADVOCACY SUPPORT  
AND INFORMATION FOR  
IMPLEMENTING AND  
SUSTAINING EARLY  
LANGUAGE PROGRAMS.**

THE NNELL WEBSITE PROVIDES  
DOCUMENTS AND INFORMATION FOR  
TEACHERS, PARENTS, AND  
COMMUNITY MEMBERS TO USE FOR  
LOCAL ADVOCACY

# NNELL Executive Board



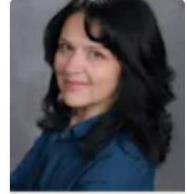
**Kathleen Priceman**

Past President



**Michelle Olah**

President



**Andrea Boyd**

President-Elect



**Jessica Owens**

Treasurer



**Karen Sasky-Hughes**

Advocacy Chair



**M. Cristina Rodríguez-Villa**

Membership Secretary



**Betsy Basom**

National Networking Coordinator



**Marissa Coulehan**

Executive Secretary



**Kelly F. Davidson**

Editor of Learning Languages



# COLLABORATE — REGIONALLY



**Pacific Northwest Regional Representative**

**Danyelle Davis**

Sage International School of Boise

1513 Tyrell Lane, #110, Boise, ID 83706



**Central States Regional Representative**

**Kathy Olson-Studler**

St. Paul Academy and Summit School

1150 Goodrich Avenue

St. Paul, Minnesota 55105

651.399.6255



**Northeast Regional Representative**

**Barbara Barnett**

Wellesley Public Schools

27 Cedar St.

Wellesley, MA 02481



**Pacific Southwest Regional Representative**

**Teresa Kennedy**

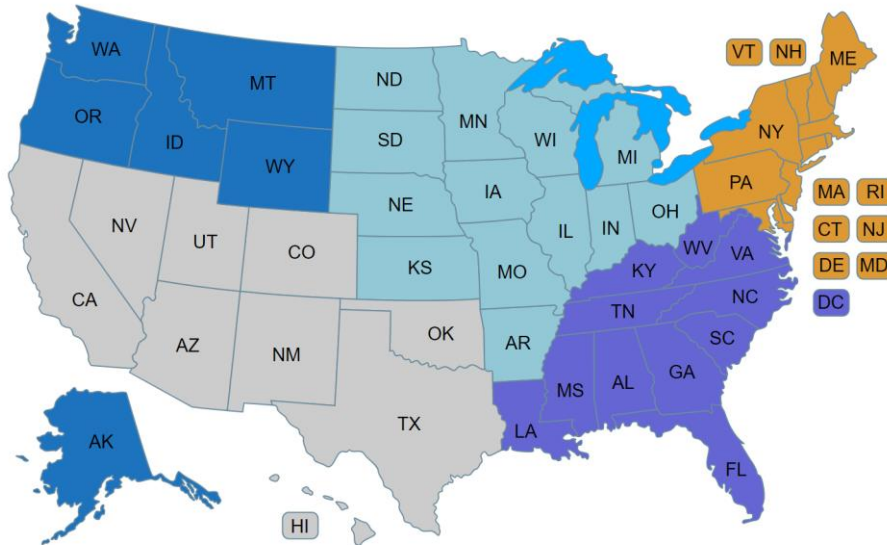
College of Education and Psychology, BEP 229F

University of Texas at Tyler

3900 University Blvd

Tyler, Texas 75799

903.565.7448



**Southeast Regional Representative**

**Jennifer Kennedy**

Fayette County Public Schools

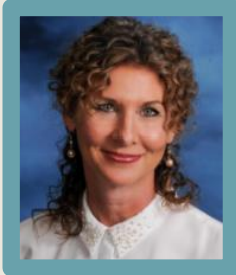
Lexington, KY



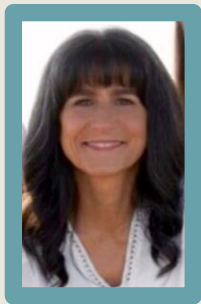
# COLLABORATE — Regionally/Locally

Pacific Southwest Region: Arizona, California, Colorado, **Hawaii**, **Nevada**, New Mexico, **Oklahoma**, Texas & Utah.

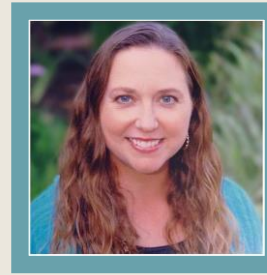
**Arizona State Rep:**  
**Maria Cristina Ladas**  
[cladas@ccusd93.net](mailto:cladas@ccusd93.net)



**Northern California State Rep: Jackie Skelton**  
[jskelton@mmboa.org](mailto:jskelton@mmboa.org) or  
[joejackieskelton@gmail.com](mailto:joejackieskelton@gmail.com)



**Southern California State Rep: Betsy Bascom**  
[bbasom@village-school.org](mailto:bbasom@village-school.org)



**Colorado State Rep:**  
**Andrea Boyd**  
[andrea.soyceleste@gmail.com](mailto:andrea.soyceleste@gmail.com)



**New Mexico State Rep:**  
**Emily Brindle**  
[brindle@cottonwoodvalley.org](mailto:brindle@cottonwoodvalley.org)



**Texas State Rep:**  
**Carolina Gomez**  
[cgomezkramer@gmail.com](mailto:cgomezkramer@gmail.com)



**Utah State Rep:**  
**Raúl Martín**  
[Raul.Martinamezaga@canyonsdistrict.org](mailto:Raul.Martinamezaga@canyonsdistrict.org)



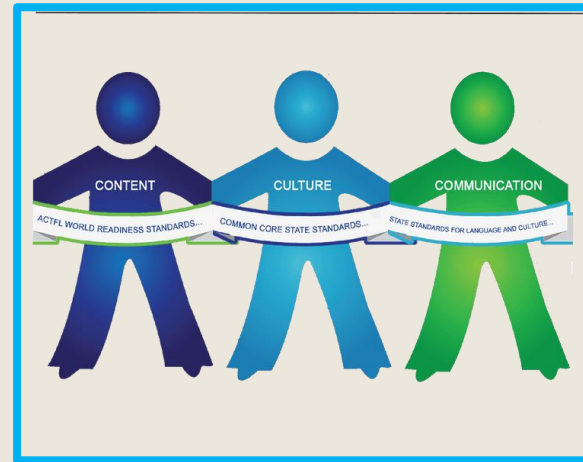
Do you know someone interested in serving as a state representative for NNEll in **Hawaii** , **Nevada**, or **Oklahoma**? **Contact:** NNEll Pacific Southwest Regional Representative Teresa Kennedy [tkennedy@uttyler.edu](mailto:tkennedy@uttyler.edu)

# NNELL COMMITTEES

*Nominating Committee*



*Awards Committee*



*Bylaws Committee*



*Advocacy Committee*

# NNELL - Networking

Oklahoma  
Foreign  
Language  
Teachers  
Association  
Annual  
Meeting,  
Tulsa, OK  
2019



Southwest Conference on Language Teaching (SWCOLT)  
and Texas Foreign Language Association (TFLA), Fort  
Worth, TX 2019



NNELL  
 Summer  
 Institute  
 Chicago, IL  
 2019



Colorado Congress of Foreign  
Language Teachers Annual  
Meeting, Aurora, Colorado - 2019





# ADVOCATE — LOCALLY

## ADVOCACY

<https://nnell.org/>

Resources and materials  
available on the  
NNELL website.



# ADVOCATE — LOCALLY

## NNELL AWARD FOR OUTSTANDING SUPPORT OF EARLY LANGUAGE LEARNING



| The NNELL Award for Outstanding Support of Early Second Language Learning is given to an individual or individuals who have demonstrated outstanding support of early second language learning of languages other than English. Nominees are individuals whose primary job responsibilities are NOT related to the field of second language education.

# COLLABORATE — LOCALLY



NNELL supports and advises increased parental involvement.



# COLLABORATE — EDUCATE and LEARN

NNELL @ ACTFL



NNELL



**Attend the annual NNELL Networking Breakfast at ACTFL!**

Networking – Raffle Prizes – Inspiring Speakers

# COLLABORATE — EDUCATE and LEARN

## NNELL ANNUAL SUMMER INSTITUTE PROFESSIONAL DEVELOPMENT CONFERENCE FOR NNELL MEMBERS BY NNELL MEMBERS



**NNELL's Virtual Summer Summit  
2021**

**Reflect and Refresh:  
Moving Forward on the Path to Proficiency**

- ✦ Pre-Conference July 22
- ✦ Conference July 23-24

➔ Registration opens May 22nd

*SAVE THE  
date*

## **PD in PJs** **Show & Share**



**NNELL** cordially invites you to collaborate and celebrate in style for a **breakfast in pajamas**!

Join your fearless colleagues across the nation for a morning /early afternoon that pays tribute to NNELL's Core Beliefs to: **Advocate, Collaborate, and Educate**. Make sure to wear your most comfortable and fashionable pajamas. Be ready to share your yummiest can't-be-without breakfast item. What breakfast item talks about you? Or what breakfast item brings back fond memories?



**Sat. 12/12/2020 @ 12:00-1:30 EST**  
Spread the joy... Bring a friend or two.



## **Monthly E-NNELL NEWSLETTER**

# COLLABORATE — EDUCATE and LEARN

## NNELLCAFÉ.



The **NNELL CAFÉ** provides professional development content for members to lead local PD activities.



# COLLABORATE — EDUCATE and LEARN



— join us for —

## #EARLYLANG

a biweekly twitter chat for early language educators  
2nd & 4th Wednesday of the Month | 8:00PM EST

# COLLABORATE — EDUCATE and LEARN

## NNELL PROFESSIONAL DEVELOPMENT WEBINARS

Are you seeking professional development in a particular area?  
On what topic would you like to see us present a webinar?  
How can NNELL help you?

Let us know at [webinars@nnell.org](mailto:webinars@nnell.org)

*(access older webinar archives in the Events menu)*



# COLLABORATE — EDUCATE and LEARN

## Learning Languages, NNELL's Journal



Opportunities to showcase your program and share your ideas by publishing in Learning Languages!



# COLLABORATE — EDUCATE and LEARN



## eNNELL News

eNNELL News is a monthly listserv publication that combines the information from eNNELL Notes and Newsworthy. It is delivered to NNELL Members on or about the 15th of every month.

To view the archive of this publication, please visit the [Members Only](#) area.

---

## Parents Connections

Parent Connections to Early Language Learning is a newsletter written for parents. Each issue addresses parent questions about early language learning and is written thematically. NNELL members who are teachers are encouraged to download and print this newsletter to send home with their students.

- Preparing for a Trip Abroad with Children
- Learning Languages as an Adult

**Opportunities to showcase your program and share your ideas by writing for the e-NNELL Newsletter!**

# COLLABORATE — EDUCATE and LEARN

## PARENT RESOURCES

NNELL wants to help parents as they support their child's learning of a second language.

We have put together a list of popular websites and mobile apps that we feel will be most beneficial in supporting you!

### Favorite Apps



### Favorite Websites



### Parent's Corner Newsletter



### ATTENTION PARENTS

NNELL has a list of **websites** and **apps** that we think will help support second language learning at home!

*Click the **Resources** menu above for details.*

**NNELL PARENT MEMBERS have access to resources to help support language acquisition and advocate for early language programs.**



Membership in NNELL is a professional investment that allows you to stay connected at the national level to support local efforts in your community. By becoming a member of NNELL, or by renewing your previous membership, you gain access to professional publications, special website areas for Members Only and access to a network of professionals who believe in early language learning.

NNELL membership is cost effective and allows any educator, regardless of service, to be a strong advocate for early language learning.

**Join online:**  
<https://nnell.org/>

- **Individual Membership** – \$30.00 for one year Membership in NNELL from September – August
- **Retired Membership** – \$15.00 for one year Membership in NNELL from September – August
- **Student Membership** – \$15.00 for one year Membership in NNELL from September – August

# NNELL



# NATIONAL NETWORK FOR EARLY LANGUAGE LEARNING **Networking Session**

**Hawaii Association of Language Teachers (HALT)**

**Teresa J. Kennedy**, NNELL Southwest Regional Representative

May 8, 2021



A word cloud featuring the phrase "Thank You" in numerous languages and scripts. The words are arranged in a dense, overlapping manner, with colors ranging from red and orange to green and blue. The languages include English, Spanish, French, Italian, German, Dutch, Russian, Chinese, Japanese, Korean, Hindi, and many others. The word "Thank You" is the most prominent, appearing in large, bold letters in the center. Other words like "Merci", "Gracias", "Danke", "Tודה", and "Arigatō" are also visible in various sizes and orientations. The background is a solid light blue.